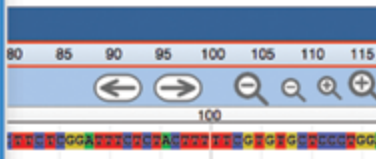


FGFR10P2 → FGFR1 
 EML4 → ALK 
 TPM3 → NTRK1 



Archer™ Analysis Pipeline

Analysis Pipeline analyzes sequencing data generated using Archer FusionPlex™ Assays to detect gene fusions, variants/mutations and copy number variations.

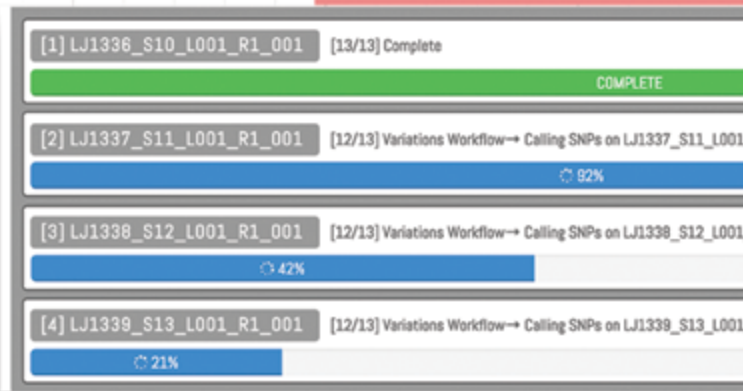
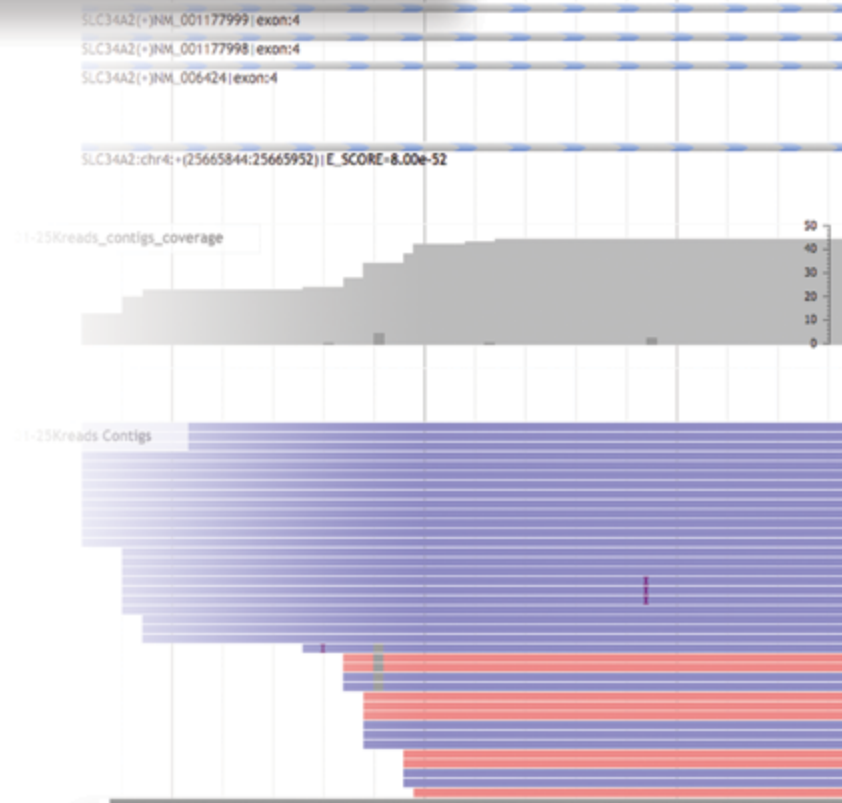
Get high-confidence fusion and mutation calls with internal controls and QC metrics as well as a database of known fusions and mutations (dbSNP and Cosmic).

Reads and annotations can be visualized directly in Analysis Pipeline via JBrowse, and the ENSEMBL Variant Effect Predictor enables you to see what the predicted effect of a mutation will have on protein function.

Secure reporting

Analysis Pipeline is installed as virtual machines on your servers, so proprietary and confidential information remains behind your firewall.

- Swift and powerful analytics
- Clear and accurate reporting
- Robust quality control metrics
- Outstanding interactive visualizations
- Intuitive user interface



Consequence
frameshift_variant&feature_elongation
regulatory_region_variant

For Research Use Only. Not for use in diagnostic procedures.

Learn more about the Archer Analysis Pipeline at www.archerdx.com/analysis-pipeline